



Project	
Nomenclature	
Type	Date
Approval	
Notes	

This family of BLRT products comes in all common imperial size formats (1x4', 2x2', 2x4'). Designed as a recessed lay-in fixture for use in T-bar ceilings, the BLRT is well suited for use in office spaces, schools, and hospitals where a clean and professional appearance is required. The BLRT is also available in all common metric size formats (750x750mm[30x30"], 500x1500mm[20x60"], more available).

Luminaire Summary

Features

- Operating temperature ranges available from -20C to 25C
- L70 of 150,000+ hours, L90 of 45,000+ hours
- Standard 0 - 10V dimming
- Available in 2700K, 3000K, 3500K, 4000K, 5000K and 6500K
- Lumen packages are available ranging from 2L (2000lm) to 10L (10000lm)

Approvals

- ETL certified to UL Canada and United States standards
- Made with UL Listed components
- DLC Listed

Mounting

- Holes provided for chain or hanger, and wire mounting support for T-Bar ceilings

Construction

- Manufactured in Ontario, Canada
- Shallow fixture design for easy installation
- Powder-coated in matte white
- Access panel provided for easy wiring
- Cold-rolled steel parts are precision bent for added strength and rigidity

Electrical

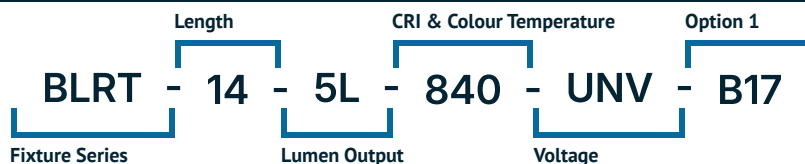
- Available in 120-277V, 347V and 120-347V

Options

- Wireless Controls Available
- 90 and 95+ CRI Options Available
- 120-347V(UN3) Available
- Passive/Active Air Handling Available

Ordering Information

Fill in the fields below with your product selections. If you need help with this section, [contact your local sales professional](#).



1	2	3	4	5	6
BLRT					

Series	Length	Lumen Output		CRI	Colour Temp	Voltage
BLRT	14 - 1x4' (ft)	14-2L (2000 lm)	24-3.5L (3500 lm)	8 - 80 CRI	27 - 2700K	UNV - 120-277V
	22 - 2x2' (ft)	14-2.5L (2500 lm)	24-4L (4000 lm)	9 - 90 CRI	30 - 3000K	347 - 347V
	24 - 2x4' (ft)	14-3L (3000 lm)	24-4.5L (4500 lm)	1 - 95+ CRI	35 - 3500K	UN3 - 120-347V
		14-3.5L (3500 lm)	24-5L (5000 lm)		40 - 4000K	
		14-4L (4000 lm)	24-5.5L (5500 lm)		50 - 5000K	
		14-4.5L (4500 lm)	24-6L (6000 lm)		65 - 6500K	
		14-5L (5000 lm)	24-6.5L (6500 lm)			
		22-2L (2000 lm)	24-7L (7000 lm)			
		22-2.5L (2500 lm)	24-7.5L (7500 lm)			
		22-3L (3000 lm)	24-8L (8000 lm)			
		22-3.5L (3500 lm)	24-8.5L (8500 lm)			
		22-4L (4000 lm)	24-9L (9000 lm)			
		22-4.5L (4500 lm)	24-9.5L (9500 lm)			
		22-5L (5000 lm)	24-10L (10000 lm)			
		24-3L (3000 lm)				

Options

Lenses

BLANK | Frosted Acrylic

Dimming

B11 | 0-10V Dimming Leads

B12 | Line Voltage Dimming

B27 | Dim-to-off Driver

B** | Other Options Available*

Controls

WC10* | Encelium Wireless Controls

WC18* | NX Wireless Controls

WC19* | Avi-on Wireless Controls

WC22* | JDRF Wireless Controls

Motion Sensors

WX15 | Internal Dimming Low Voltage Microwave Sensor

WC20 | Leviton Low-Voltage Sensor

W** | Other Options Available*

Emergency Driver

B17 | UL924 10W Battery Back-up

F8 | UL924 Emergency Relay

Air Handling

H20 | Housing with Passive Air Handling

H24 | Housing with Active Air Handling

Finish

BLANK | Standard Matte White

C5 | Matte Black

CUSTOM* | Custom Colour Choice

Packaging

BLANK | Individually Boxed on Pallets

P0 | Bulk Packaging

P** | Other Options Available*

Mounting

M15 | Surface Mount Kit (packaged separately)

T-Bar & Drywall Kits

BLANK | Standard T-Bar

TB39 | 9/16"

H40 | Drywall Kit (packaged separately)

Warranty

CL7 | 10-Year Comprehensive Warranty Upgrade

Documentation and Resources

All files and resources are available on our website for download. Files and resources are also embedded as links in this document, listed below. Additional files may be available upon request. Please contact your local sales agent [here](#) or contact sales@bjtake.com for more information.

- BLRT - Installation Instructions
- BLRT14-2L
- BLRT14-2.5L
- BLRT14-3L
- BLRT14-3.5L
- BLRT14-4L
- BLRT14-4.5L
- BLRT14-5L
- BLRT14-5.5L
- BLRT14-6L
- BLRT14-6.5L
- BLRT14-7L
- BLRT14-7.5L
- BLRT14-8L
- BLRT14-8.5L
- BLRT14-9L
- BLRT14-9.5L
- BLRT14-10L
- BLRT22-2L
- BLRT22-2.5L
- BLRT22-3L
- BLRT22-3.5L
- BLRT22-4L
- BLRT22-4.5L
- BLRT24-2L
- BLRT24-3L
- BLRT24-3.5L
- BLRT24-4L
- BLRT24-4.5L
- BLRT24-5L
- BLRT24-5.5L
- BLRT24-6L
- BLRT24-7L
- BLRT24-7.5L
- BLRT24-8L
- BLRT24-8.5L
- BLRT24-9L
- BLRT24-9.5L
- BLRT24-10L

Certifications and Listings

Certifications that apply to this fixture and its possible configurations are listed here. More information available upon request.

Icon	Description
	Wireless Controls Available
	DLC Listed
	ETL Listed
	90 and 95+ CRI Options Available
	120-347V(UN3) Available

Usage Applications

This fixture can be used in a variety of applications, and is ideal for the following:

Usage Application
Hospitals
Offices
Schools

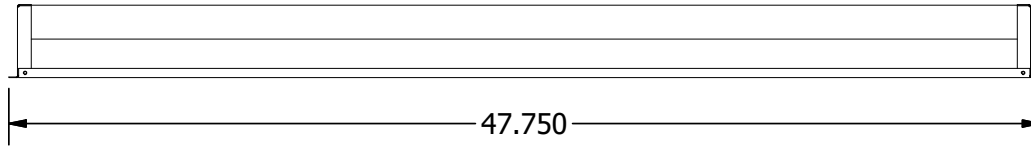
Warranty Statement

BJ Take products are tested and/or inspected prior to being packaged for shipment and are guaranteed from the day the product is shipped for a period of ten-year LED chip warranty and a five-year comprehensive component warranty. This can be upgraded to a ten-year comprehensive warranty on request.

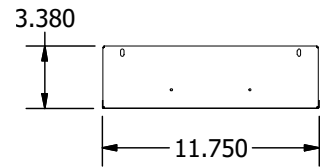
BLRT

LED Recessed Troffer | Dimensions

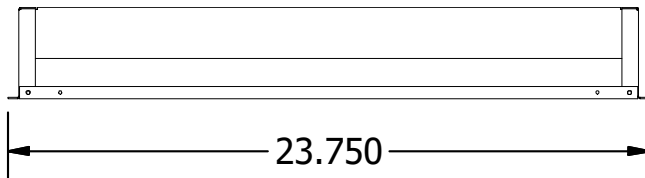
BLRT, 1x4 Foot, Side Dims



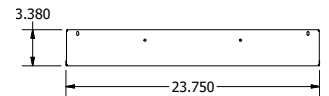
1x4 End View



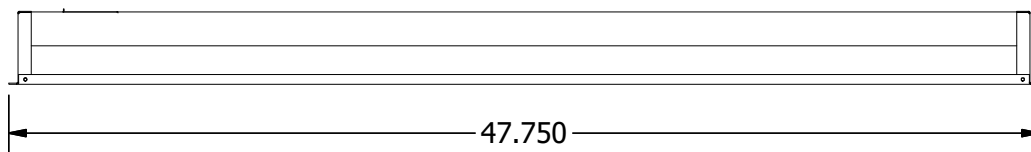
BLRT, 2x2 Foot, Side Dims



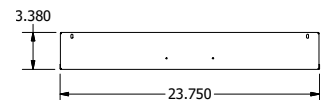
2x2 End View



BLRT, 2x4 Foot, Side Dims



2x4 End View



- * Drawings aren't to scale
- * Standard tolerances apply
- * Specifications may change without notice

Important Information

Below you will find the available wattage charts for the BLRT. For any required specifications that are not listed here, please contact our sales team at sales@bjtake.com to request any additional information.

BLRT, 1x4 Foot Wattage

Size	Lumen Output	Actual Lumen Output	Wattage
1x4	2.00	2009	14.80
1x4	2.50	2508	18.40
1x4	3.00	3005	22.10
1x4	3.50	3500	25.80
1x4	4.00	3994	29.50
1x4	4.50	4486	33.20
1x4	5.00	4977	36.80

BLRT, 2x2 Foot Wattage

Size	Lumen Output	Actual Lumen Output	Wattage
2x2	2.00	1989	14.80
2x2	2.50	2483	18.40
2x2	3.00	2975	22.10
2x2	3.50	3465	25.80
2x2	4.00	3954	29.50
2x2	4.50	4441	33.20
2x2	5.00	4927	36.80

BLRT, 2x4 Foot Wattage

Size	Lumen Output	Actual Lumen Output	Wattage
2x4	3.00	3254	21.70
2x4	3.50	3780	25.30
2x4	4.00	4300	29.00
2x4	4.50	4812	32.70
2x4	5.00	5316	36.30
2x4	6.00	6304	43.70
2x4	7.00	7263	51.00
2x4	8.00	8192	58.40
2x4	9.00	9093	65.70
2x4	10.00	9966	73.00

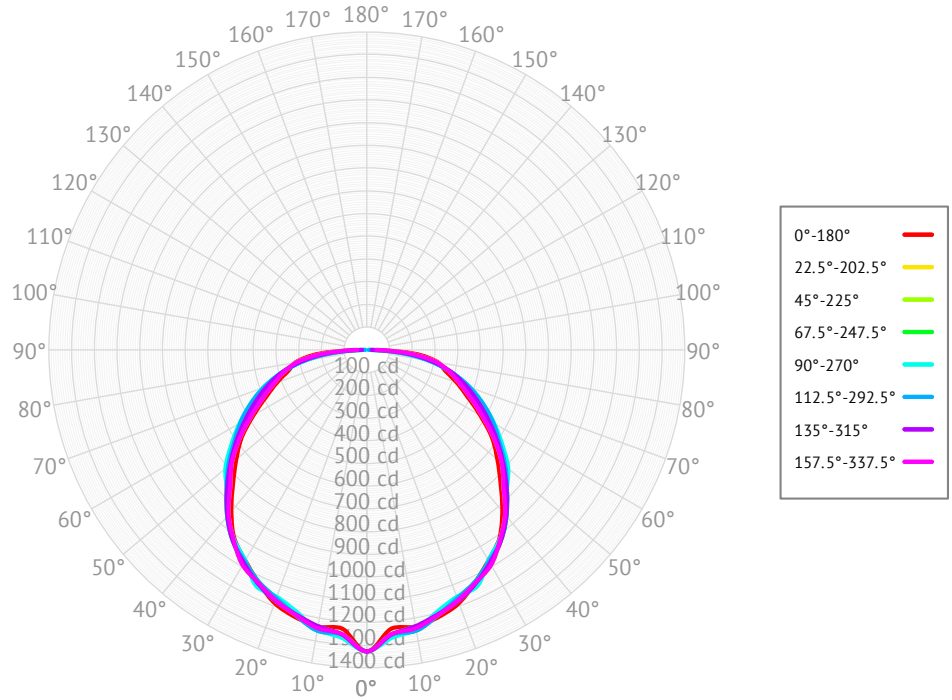
BLRT, Light Loss Factor

CCT	Output%
2700K	92.95
3000K	95.51
3500K	96.80
4000K	100.00
5000K	101.28
90CRI	84.72

BLRT14-4L-840

Cone of Light

Mtg Height	Light Level	Beam Diameter
6.0 ft	36.9 fc	17.4 ft
8.0 ft	20.7 fc	23.2 ft
10.0 ft	13.3 fc	29.1 ft
12.0 ft	9.2 fc	34.9 ft
14.0 ft	6.8 fc	40.7 ft
16.0 ft	5.2 fc	46.5 ft

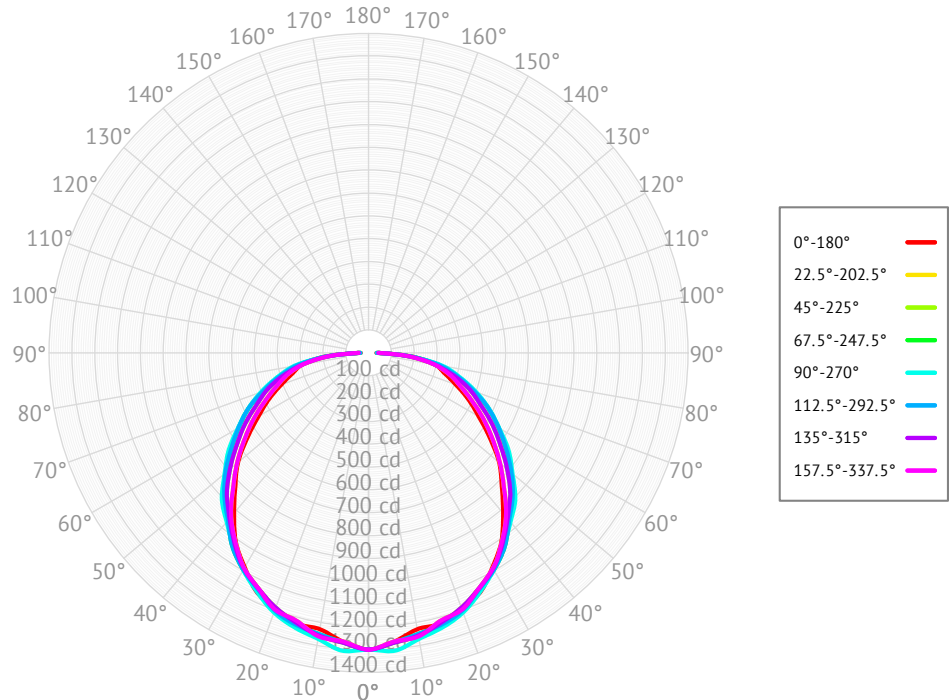


Based on 'BLRT14-4L-840', ie. (BLRT, 1x4 foot, 4000lm, 80 CRI, 4000K, w/ Frosted Acrylic Lens)

BLRT22-4L-840

Cone of Light

Mtg Height	Light Level	Beam Diameter
6.0 ft	36.1 fc	16.9 ft
8.0 ft	20.3 fc	22.5 ft
10.0 ft	13.0 fc	28.2 ft
12.0 ft	9.0 fc	33.8 ft
14.0 ft	6.6 fc	39.4 ft
16.0 ft	5.1 fc	45.1 ft

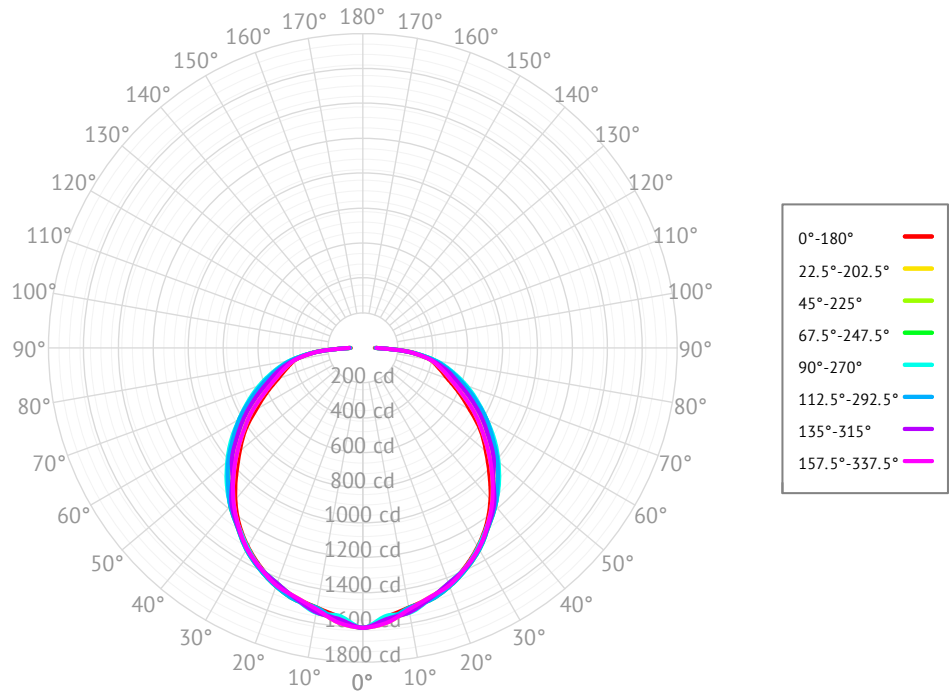


Based on 'BLRT22-4L-840', ie. (BLRT, 2x2 foot, 4000lm, 80 CRI, 4000K, w/ Frosted Acrylic Lens)

BLRT24-5L-840

Cone of Light

Mtg Height	Light Level	Beam Diameter
6.0 ft	44.5 fc	17.8 ft
8.0 ft	25.0 fc	23.7 ft
10.0 ft	16.0 fc	29.6 ft
12.0 ft	11.1 fc	35.5 ft
14.0 ft	8.2 fc	41.4 ft
16.0 ft	6.3 fc	47.4 ft

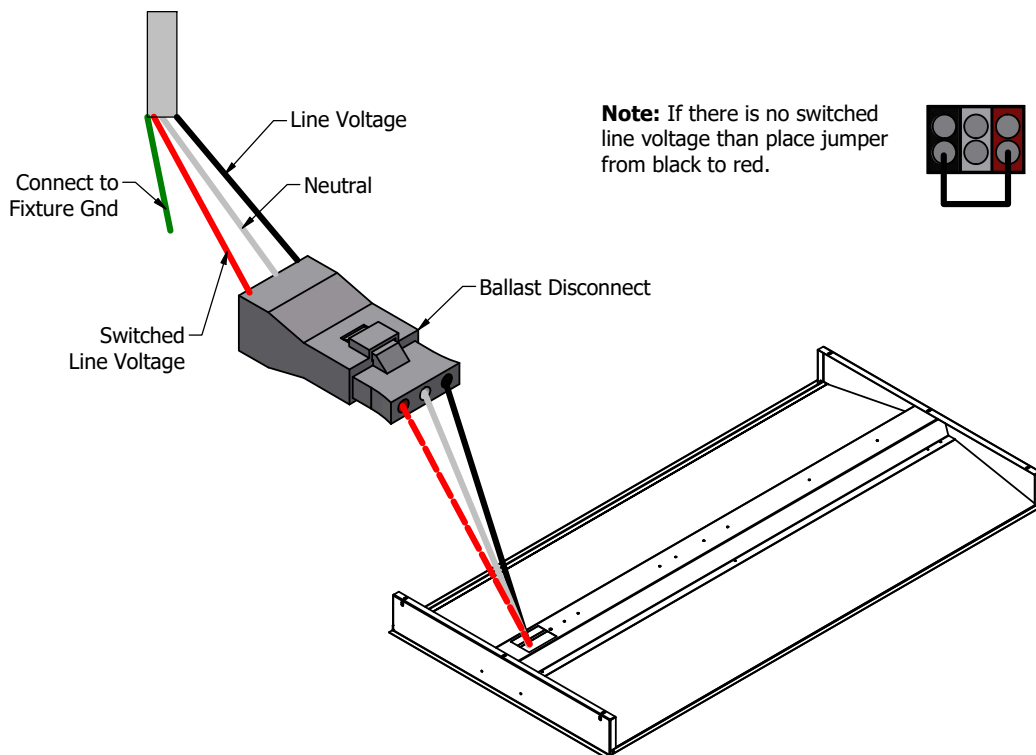


Based on 'BLRT24-5L-840', ie. (BLRT, 2x4 foot, 5000lm, 80 CRI, 4000K, w/ Frosted Acrylic Lens)

Emergency Battery Plan - 10W

Emergency Lighting	Solution System Components	System Operation
Option Code 'B17' - UL 924 listed components that are factory installed in the luminaire	UL 924 listed 10-watt battery integral to the luminaire	Loss of normal power is detected by the B17 emergency light solution and the power supply is switched automatically to the 10-watt integral battery pack which powers the emergency LED lighting driver.
	UL 924 listed LED emergency lighting driver integral to the luminaire	The battery pack and emergency LED driver are UL 924 certified to provide a minimum of 90-minutes of emergency lighting.
	Wiring options for both switched and unswitched emergency lighting	

Emergency Lighting Wiring



Important Information

More information on emergency lighting options and configurations available on request.